

# Curriculum and Knowledge Map - Year 1 Term 2

## Stepping Stones

### Communication and Language (CL)

To develop understanding of appropriate responses within interactions with others. To demonstrate understanding of familiar stimuli and begin to show anticipation through gestures, signs, symbols or words. To develop understanding of everyday language within routines. To continue to develop understanding of how to make my needs, wants and feelings known to others.

### Physical Development (PD)

To demonstrate awareness of the use of different equipment, including balls. To explore different textures and develop awareness of how to manipulate pliable materials. To demonstrate understanding of familiar dressing routines, making attempts at independence. To explore the use of different fastenings.

### Personal, Social and Emotional Development (PSED)

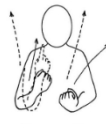
To develop understanding between positive and negative behaviours and interactions, exploring regulation strategies. To develop awareness of boundaries and expectations within the daily routine and familiar activities.

### Literacy (L)

To experience poetry and rhyme through a variety of nursery rhymes and songs. To explore and identify everyday objects and language within structured and play-based activities. To develop awareness of how to make different marks using sensory materials and tools.

### Celebrations

#### Sign bank



fireworks



Halloween



Slide top hand back towards body. Close and move back onto left hand.

Christmas

### Mathematics (M)

To develop understanding of comparative language, including more, less, same, one, lots. To show anticipation within familiar counting sequences or activities. To develop problem solving and reasoning skills through practical activities, including doubling, halving and sharing.

### Understanding the World (UW)

To experience local countryside or farms, including safety when travelling. To demonstrate awareness of plants and animals by identifying or making gestures or sounds. To explore the life cycle of a plant or animal.

### Expressive Arts and Design (EAD)

To develop awareness of colour and texture by making marks with different tools and materials. To explore different artistic techniques, including printing, splattering and finger painting. To explore how to make different sounds using instruments and technology.

### Me and My Community

Exploring local area, developing awareness of animals and wildlife within the local community.

To experience animals within their habitats (e.g. a farm).

To experience lights and decorations within different celebrations.